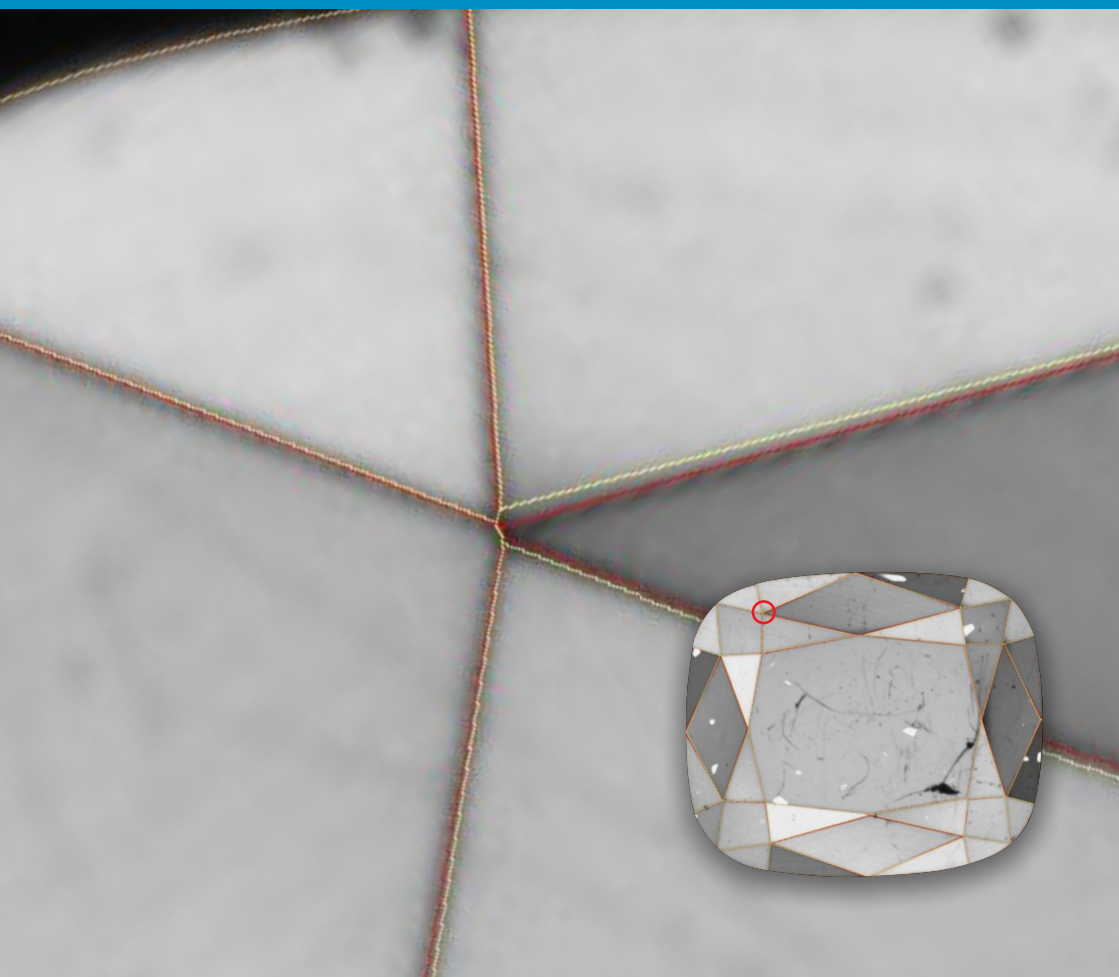


# Helium Polish Oxygen

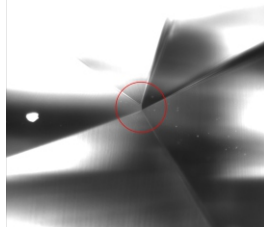
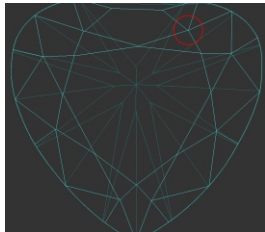
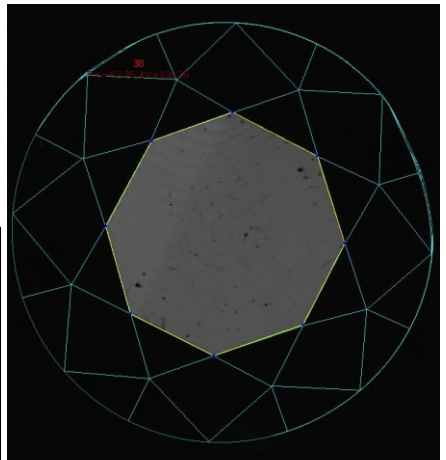
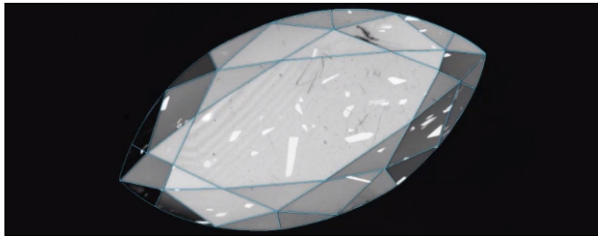
## Crown Reflect

*the guru of helium polish scanner*



# Salient Features

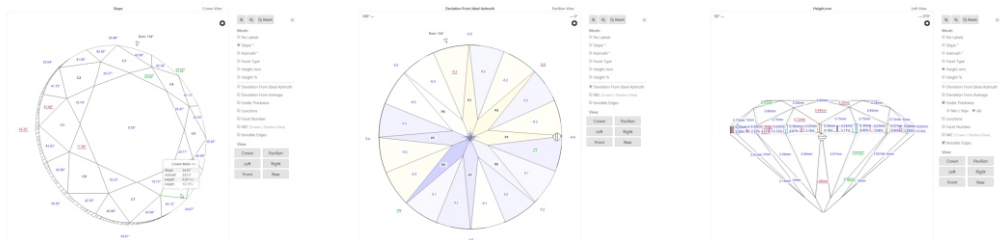
- ✓ Scanning and report generation time as small as 8 seconds.
- ✓ Very accurate table measurement, being direct measurement. (Slope angle range 0° & 15° to 40°)
- ✓ Generates a collage for a quick scan check.
- ✓ Generates objective Optical Symmetry Index for RBCs as well as for Fancies.



- ✓ Consistent measurement readings comfort the grader grade the stone objectively. The minor symmetries are very precisely picked up, allowing graders to completely rely on the 3D model built by the scanner, and grade the symmetry objectively.

Junctions as corrected and built by HPO-CR scanner

- ✓ Helium Polish Crown Reflect scanner do not require any adjustments or calibration. In fact the precision is built into the scanner to consistently give the correct reading all the time, no matter where the scanner is installed or when it is used.
- ✓ Mini i3D report includes everything one wants to see after the scan.



- ✓ The Oxygen program allows one to prepare optional\* Custom Report to suitable any specific need or analysis.
- ✓ More than 3000 data fields are exported, including images for every scan.
- ✓ Useful for Rounds and almost all Fancies.
- ✓ Can build 3D models of special fancy cut diamonds with very high precision. while using sample ASC as scan reference.
- ✓ Helps polishers in correcting the multi-fold symmetry, and the grader to objectively grade the shape symmetry based on the scan data:
- ✓ Generates objective optical symmetry index.